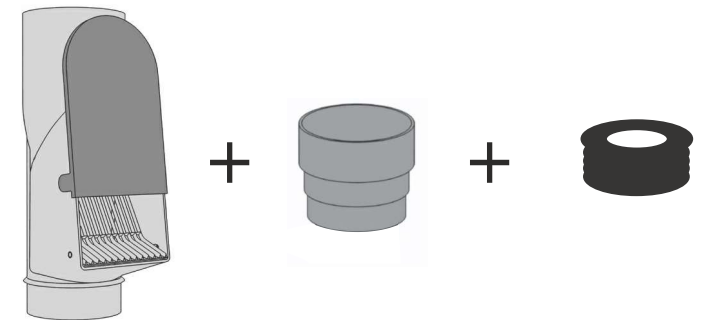
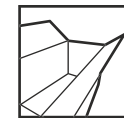
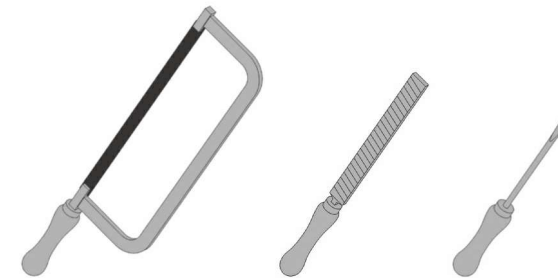
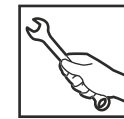
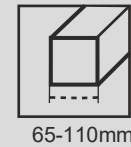


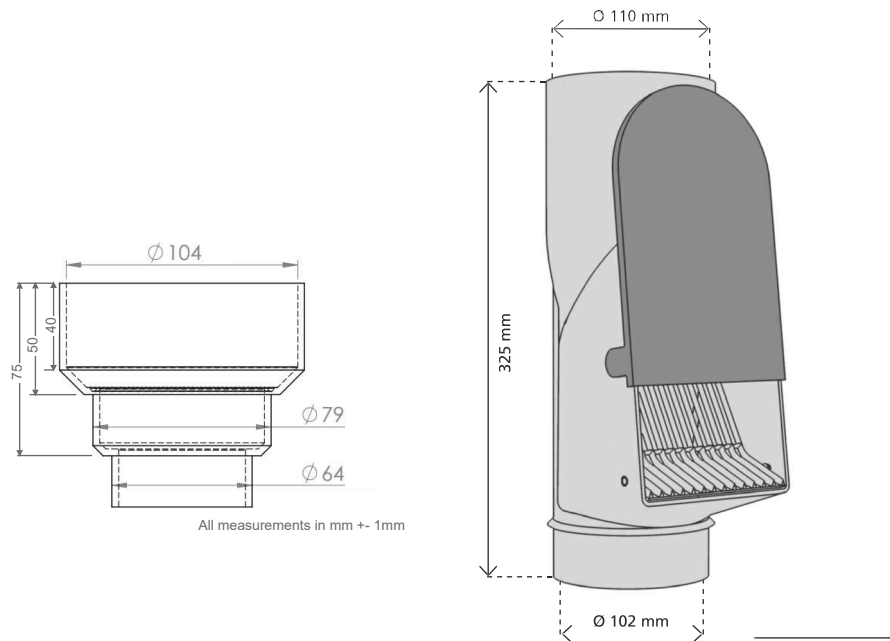
Laubabscheider

- (GB) Leaf Separator
- (NL) Bladafscheider
- (I) Separatore per loghe
- (P) Separador de folhas
- (F) Séparateur de feuilles
- (S) Lövavskiljare
- (E) Separador de hojas



2000210UK
2000220UK





Customising the Rubber Grommet (if using)

The rubber grommet is optionally used when fitting the Leaf Separator to small downpipes (typically 68mm round and 65mm square). It is sided with a square hole at one end and a circular hole at the other.

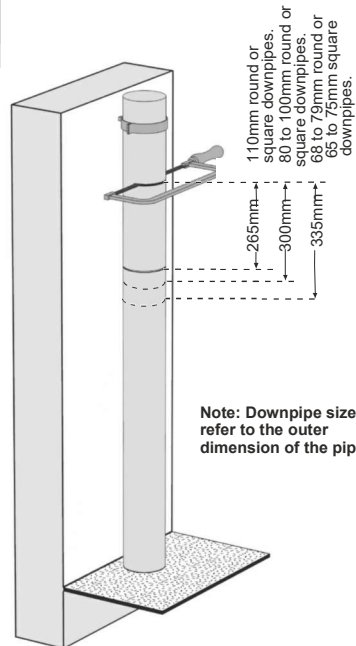
Fit the grommet with square hole upwards for square downpipes.
Fit the grommet with round hole upwards for round downpipes.

Note: The grommet will only fit into the top of the Filter once the lower flange has been trimmed. See pictures below



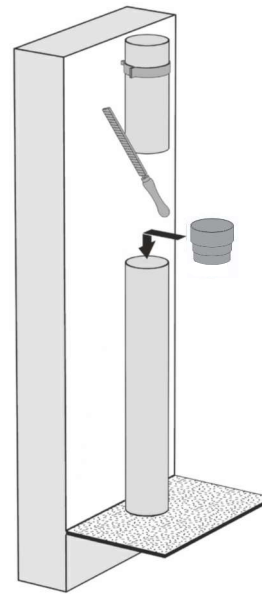
Trim the lower flange (only) with a good pair of kitchen scissors. (Shown here for fitting to round downpipe). Note 3rd photo shows before and after with grommets held upside down

1.



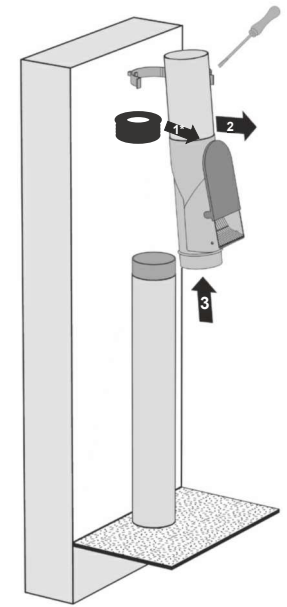
Note: Downpipe sizes refer to the outer dimension of the pipe

2.



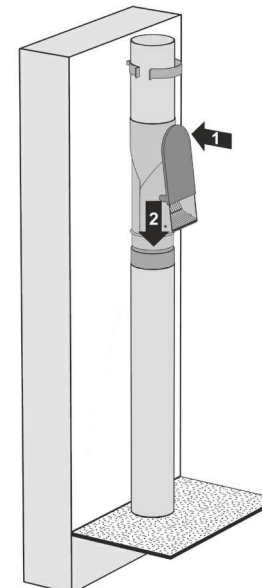
Note: for 110mm downpipes the lower adaptor is not required.

3.



Note: insert rubber grommet into Leaf Separator before fitting Leaf Separator to downpipe(see Customising Rubber Grommet overleaf).

4.



5.

