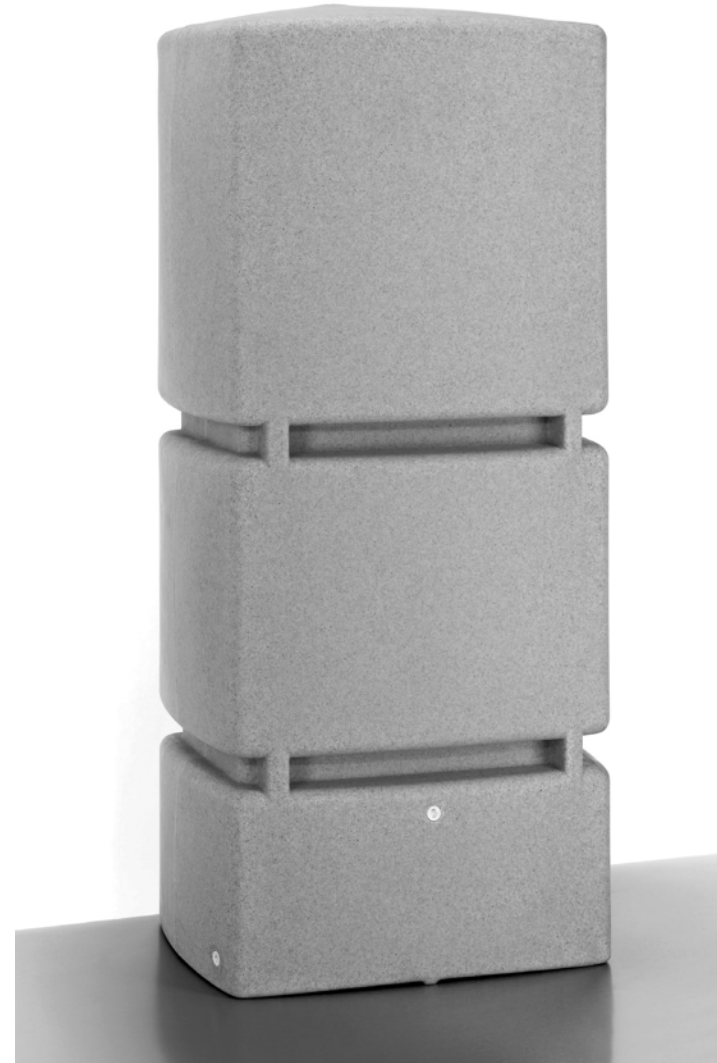


### 5. Installing the Wall Bracket (optional)

- A) Locate the correct position.
- B) Mark the position and drill.
- C) Attach the bracket to the tank using the nut and bolt supplied.
- D) Attach the bracket to the wall using the screw supplied.

Note: You may need to use alternative fittings depending on your wall type. If in doubt, consult a professional.

It is possible to connect two or more tanks together and even to form an above-ground rainwater system. Use the 250mm 3P Tank to Tank Connection Set, and consult your supplier if you have any queries or wish to purchase further



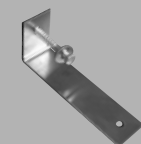
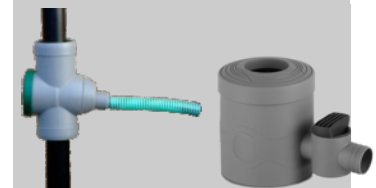
The 3P Wall Tank is delivered with a full Kit including a hi-flow plastic tap and hole saw. To fill the Wall Tank, we recommend using the 3P Filter Collector or the Universal versions, with Universal Long Link Kits available to longer lengths. If in any doubt during installation, please consult a professional tradesperson.

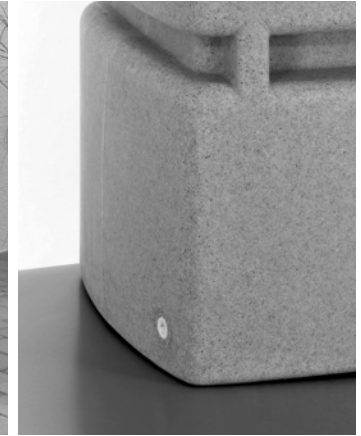
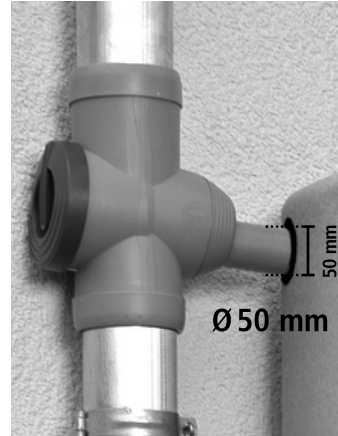
## Instructions

We recommend using the 3P Filter Collector to fill the rainwater tank. Available in four colours:



Where the water butt cannot be located within 30 cm of the down pipe, longer Long Link Kits are available online (Art. No. 9000123L to L5).





### 1. Setting Up

Site the Jumbo Wall Tank on a firm, level surface, near to the downpipe. Siting on soft or uneven ground can cause deformation of the tank over the long term.

**When the tank is full is must not touch your wall or any other tanks at any point.** Therefore, before filling, position the tank at least 50mm away from the wall and other tanks. This will allow the Wall Tank walls to naturally flex all around as it is filled with water.

Once the Wall Tank is full, check that the Tank is not touching your wall at any point. Reposition as necessary.

### 2. Connection to the Downpipe

Locate the area to form a hole for connecting the downpipe filter or diverter.

Use the hole-saw set, taking care to select the correct saw size.

Choose the 32 mm hole-saw for 32 mm connections, or the 58 mm hole-saw for 50 mm connections.

The 50 mm size is ideal for push-fit connections such as the 3P Filter Collector.

Double check sizes before drilling.

Refer to the instructions for your selected downpipe filter. If in doubt, consult a professional. The 50mm outlet size will give the maximum yield of rainwater under the very heaviest rainfall conditions.

### 3. Collecting Water

The side ports can be used to drain down tanks, or to form a system of interconnected tanks.

You can also connect pumps to the side port. We recommend the Steelpump XAJE80P. Tank to pump Connection kits are available.

Contact your dealer for details.

There is a 3/4" BSP thread at 30 cm above tank base to connect a tap or other 3/4" BSP fitting.

### 4. Winter Care Precautions

In times of prolonged freezing weather, the Wall Tank should be drained down partially or completely by removing either of the lower side plugs.