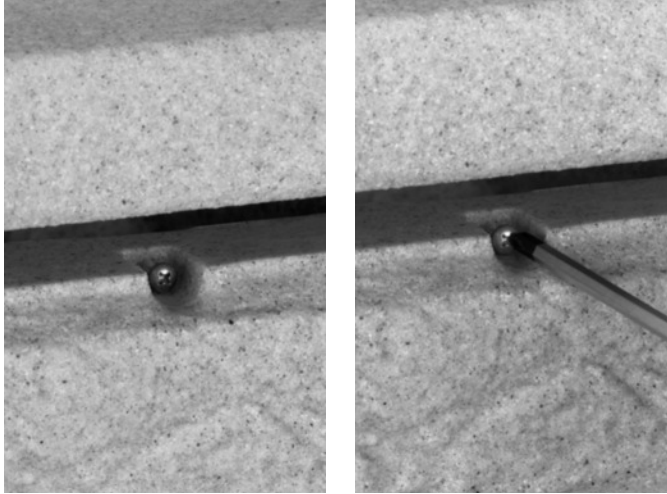


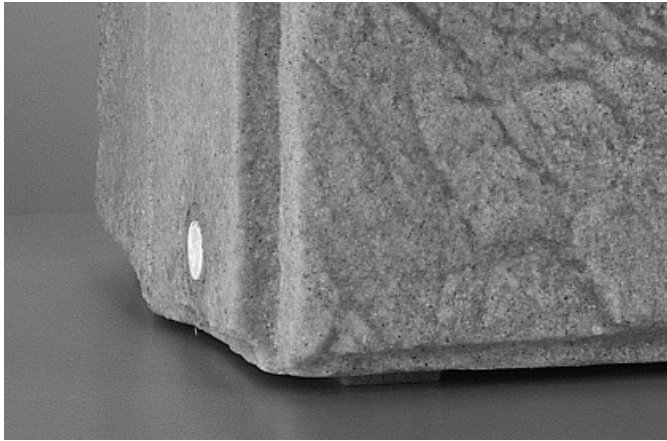
5. Childproof Lid

Using the screw provided, fit the childproof lid.



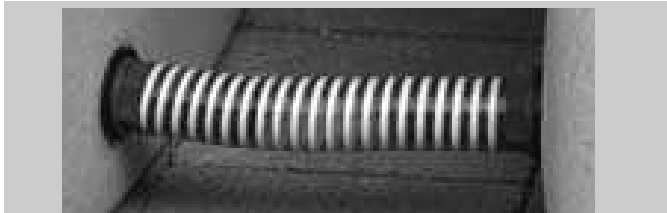
6. Lower 3/4" Threaded Ports

Can be used for tank drain down, tank to tank connection or a second outlet (using a ball-valve or similar). The plastic bungs are turned to open or tighten the port.



Winter Care Precautions

To prevent any damage from being caused, we recommend the tank is drained completely and disconnected from the rainwater inlet during prolonged freezing weather conditions.



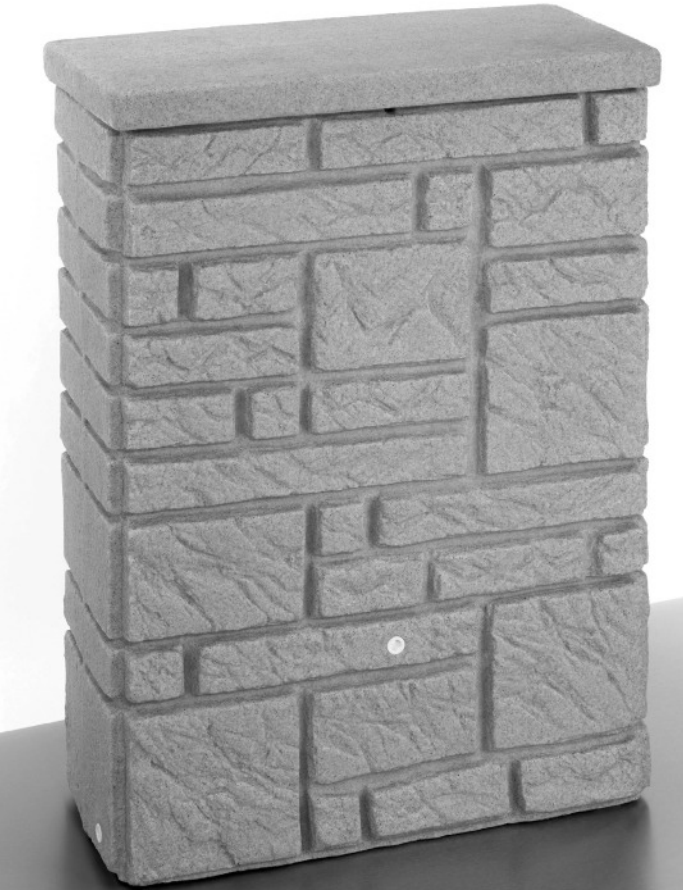
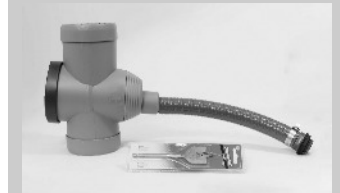
It is possible to connect two tanks together using the drain down points near the base. The 3P Connection Set 250mm (Art. No. 9000326) is ideal.

Instructions

To fill the Maurano, we recommend using the 3P Filter Collector Universal.

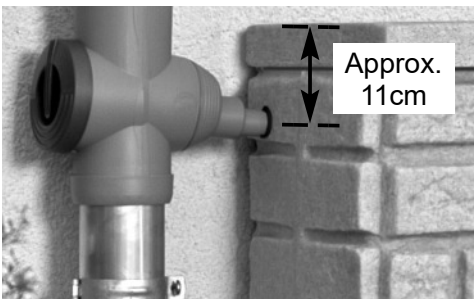
The 3P Filter Collector Universal is available in 4 colours and comes with a 30cm hose.

Where the water butt cannot be located within 30cm of the downpipe, the longer Universal Long Link Kits are available online (Art. No. 9000123U to U5).



The Maurano is delivered with an accessory kit which includes a chrome tap, wall bracket, and screws.

If in any doubt during installation, please consult a professional tradesperson or the supplier of your filter or diverter.



Approx.
11cm



32mm Flat Bit (Included with the 3P Technik Filter Collector Universal)

1. Setting Up

Site the Maurano on a firm, level surface adjacent to a downpipe.

To divert rain from your downpipe into the Maurano water butt, refer to your Filter Collector Universal or other rain diverter instructions.

2. Fitting the 3P Filter Collector Universal Link Kit

Measuring and Marking Out

Decide on the place to drill a hole for connecting the downpipe filter or diverter. For the 3P Filter Collector Universal the hole needs to be centred approximately 11cm from the top of the lid. This location is also ideal for all connections of 32mm (1 1/4") or less). See also instructions with your chosen rain diverter.

Mark the point.

Hole Cutter Selection - 32 mm

To fill the water butt with the recommended 3P Filter Collector Universal, select the 32mm flat bit provided with the 3P Filter Collector Universal.

Drilling

Offer the 32mm drill to your marked point, proceed to drill. If you are not fitting a 3P Filter Collector Universal, double check you are drilling the correct sized hole for your chosen connection set.



Hose tail with Grommet and Backnut.
(Included with the 3P Technik Filter Collector Universal)

Attaching a Backnut & Hosetail

Hold the backnut on the inside of the hole and screw on the hosetail and rubber grommet on the outside.

The hose tail then attaches to the hose from the 3P Filter Collector Universal and secured with the hoseclips supplied (see Filter Collector Instructions).



3. Connecting the Tap

Screw the 3/4" metal tap provided in the Kit into the 3/4" BSP connection thread. If necessary, use PTFE tape when installing the tap to create a more watertight seal and to allow the tap to sit in the correct position.

4. Fixing the Wall Bracket

Fill the tank with water before attaching the wall bracket to avoid deflection.

Fit the enclosed (optional) Wall Bracket in exposed situations

If in any doubt during installation, please consult a professional tradesperson or the supplier of your filter or diverter.